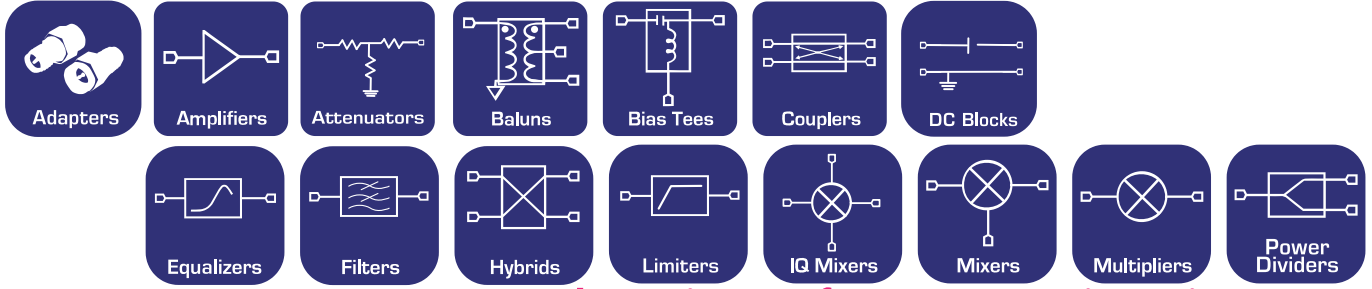


# Bare Die, Surface Mount, Connectorized | DC-125GHz



Shattering Performance Barriers Since 1991

(<https://www.markimicrowave.com>)

## LC Filter Design Tool

[More info \(/lc-filter/description.html\)](/lc-filter/description.html)

### Filter Properties

#### Response

Lowpass

#### Type

Chebyshev

#### Topology

Shunt First

#### Order

3

#### Cutoff Frequency

440

MHz

#### Passband Ripple (dB)

0.10

#### Input Impedance ( $\Omega$ )

50

#### Output Impedance ( $\Omega$ )

50

### Additional Settings

#### Component Values

Exact

Compute

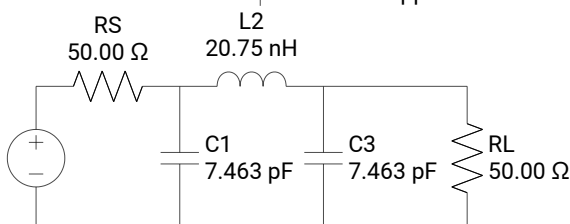
Reset (/lc-filter/)



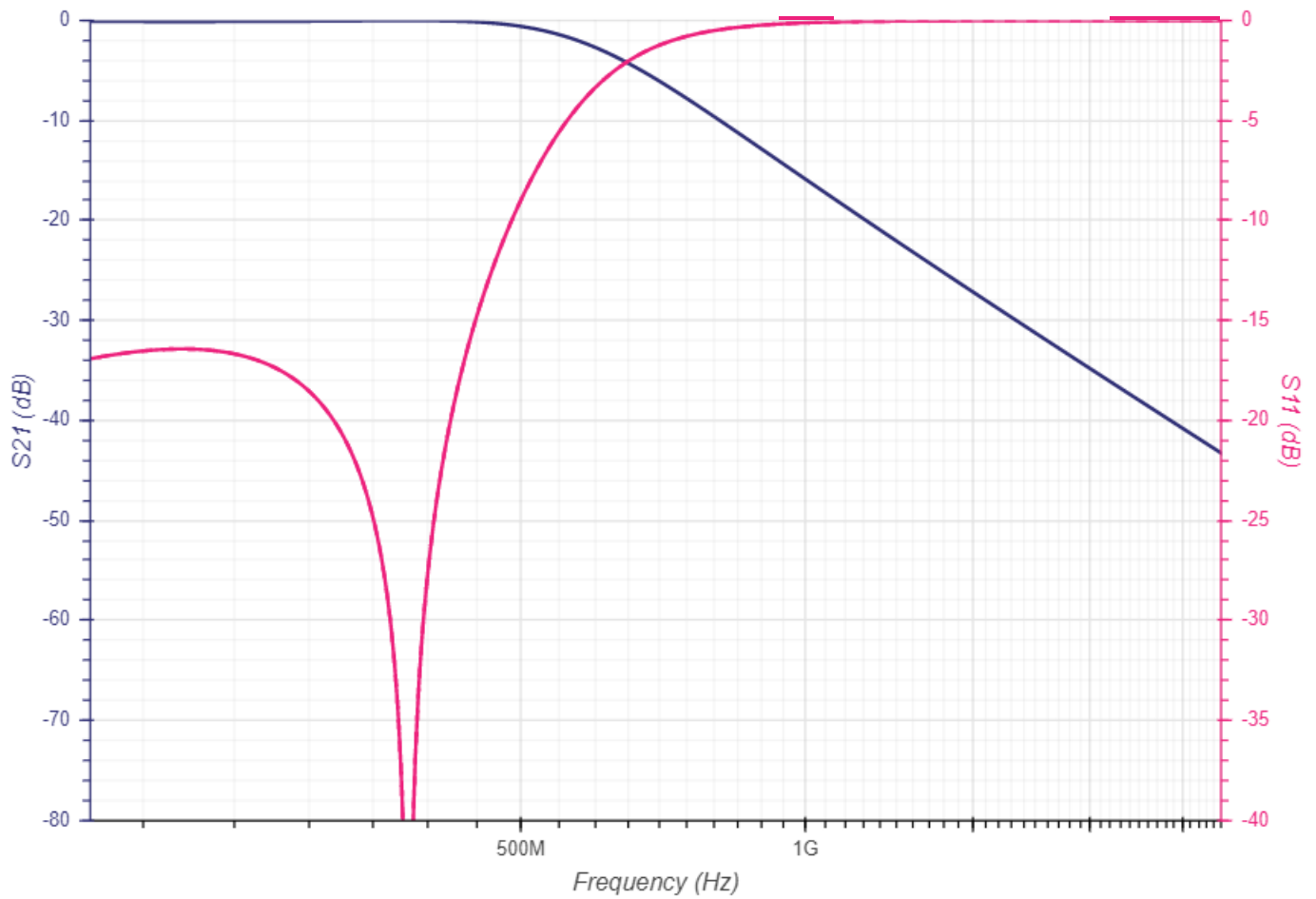
### 3rd Order Chebyshev Lowpass

Cutoff Frequency = 440.0 MHz

Passband Ripple = 0.1 dB



markimicrowave.com | Mar 26, 2023



markimicrowave.com | Mar 26, 2023